



Coachella Valley ARES: What You Need To Know

Don Stouder, N1GAY
CV ARES Emergency Coordinator

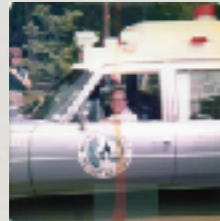



**Treat/Rescue with Modest Means
Our Low-Cost Archer®
Four-Way Radio Base Station**

29⁹⁵ *The Perfect Aid
to Existing CB Radios!*

Designed especially for use with non-automated
this unit, this base station provides true variable
frequency performance! Transmit and receive on CB
Channel 36, channel 40, 29 CB channels, and
more. Color, Super 10 Ant. gain, "Push-to-talk"
mode, auxiliary, and w/ "power" listening, which
extends 100 WPM, no license required! With 40
channel select, search, Code Map, Crystal, etc., 14
90-9999, 1000, w/ 3 dB, 1000, 1000, 1000, 1000,
25-446, 1000, 1000, 1000, 1000, 1000,
10-792, AC Adapter

Where I started





Amateur Radio Emergency Services

- What is ARES?
 - The Amateur Radio Emergency Service® (ARES) consists of licensed amateurs who have voluntarily registered their qualifications and equipment, with their local ARES leadership, for communications duty in the public service in the event of a communications emergency.
 - ARES consists of more than 40,000 licensed amateurs nationwide.

What...

- ...is Emergency Communications
 - The actions taken to continue to move information between Governments (Federal, State, Local), Non-Governmental Agencies, and between Citizens during a communications emergency. Goal: Establish reliable communication to convey pertinent information.
- ...is a Communications Emergency
 - A communications emergency exists when a critical communications system fails or is overloaded and puts the public at risk.
 - (ARRL Introduction to Amateur Radio Emergency Communications, 2019)

What information are we sending and why?

“Situational Awareness”

Local information

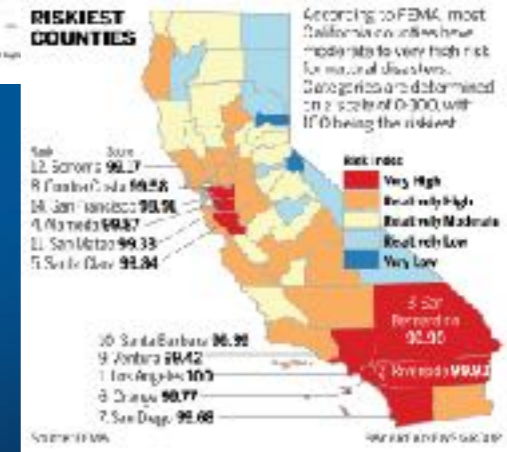
Health and status

Weather

Status of current events/efforts

Requesting supplies/relief

Welfare Traffic



The hazards included in this EOP were agreed upon by the County of Riverside MILHMP Steering Committee. The hazards selected were ranked on potential effect using key criteria such as frequency, deaths, injuries, property damage, and economic effect. The natural hazards evaluated as part of this plan include those that have occurred historically or have the potential to cause significant human and/or monetary losses in the future. The following hazards were ranked by the MILHMP Steering Committee for the 2024 plan:

Hazard	RANKING
NATURAL DISASTER / CLIMATE	1-24
EARTHQUAKE	2
FIRE	1
FLOOD	3

2024 Page 24 of 142 Emergency Operations Plan

Hazard	Rank
ACQUEDUCT FAILURE	19
DROUGHT	8
EXTREME WEATHER	7
INSECT INFESTATION	15
LANDSLIDE	14
TORNADO	22
ANTHOPOGENIC / TECHNOLOGICAL	
CIVIL DISORDER	17
COMMUNICATIONS FAILURE	12
CYBER ATTACK / CYBER TERRORISM	10
DAM FAILURE	13
ELECTRICAL FAILURE	6
HAZARDOUS MATERIALS INCIDENT	9
JAIL PRISON BREACH	20
NUCLEAR INCIDENT	23
PIPELINE DISRUPTION	21
RADIOLOGICAL INCIDENT	24
TERRORIST EVENT	11
TRANSPORTATION FAILURE	16
WATER SUPPLY DISRUPTION / CONTAMINATION	18
MEDICAL	
EMERGING / RE-EMERGING INFECTIOUS DISEASES	3
PANDEMIC	4

ARkStorm AR
Very Big Earthquake
Prolonged Power Failure (Grid Down)

Coronal Mass Ejection (CME)
Electro-Magnetic Pulse (bomb)
Terrorism (Foreign or Domestic)

Prepping

16

Weather (Heat, Tropical Storms + AR)
Localized Earthquake
Localized power failures in Summer.

My Top 3

16

What Resources Do We Have?

- Excellent planning. (Local, County, State)
- R.A.C.E.S. via RivCo EM.
- Active CERT Teams.
- NGO's very well represented.
- 17 repeaters in 9 locations.
 - includes solar 220 + CV GMRS.
 - Every mode imaginable.
- Flat topography = simplex.
- Not as isolated as we think.
- Active nets including Analog, Digital, AREDN, Winlink.
- One of the largest Ham clubs in the US.



Repeaters I Can Hit

Edom Hill (5)
 Tram (3)
 JW Marriott (1)
 CVARC (1)
 Toro (3)
 Indio (1)
 Santa Rosa (1)
 Snow Peak (1)
 CV GMRS (1)

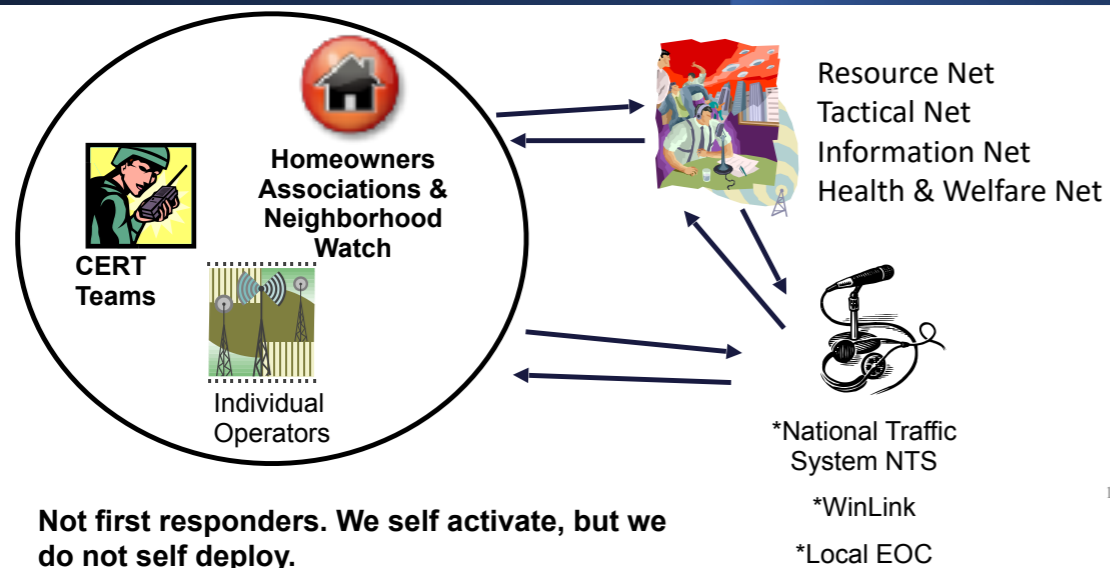
Where does ARES fit?

- ARES moves **information** from affected areas by volunteer members on the ground in the affected area to other members both within and outside the affected area.
- This information is transmitted via local frequencies to other members using HF, VHF/UHF frequencies to move traffic onto the National Traffic System (NTS) and/or to other Governmental and Non-Governmental organizations or simply to other citizens who are prepared to help. This includes local Emergency Operations Centers.
- ARES volunteers are encouraged to monitor their normal net frequencies during times of crisis and be ready to relay information and/or assume the position of net control. Anyone can activate net control; does not require ARES leadership.

Neighbors helping neighbors.

18

How Emergency Communicators Activate



19

How Do We Activate?

- Incident Happens.
- Email, Text Alerts. (aresdb.com)
- Announce on all DRATS repeaters.
- Open Net on San J repeater.
- Take roll and inventory needs and resources.
- Leadership activates ICS.
- Continual updates for situational awareness.
- Respond to situation as appropriate.



20



“Served Agencies”



Hospitals
Local Government
American Red Cross
Salvation Army
REACT



LA + SD = Hospitals

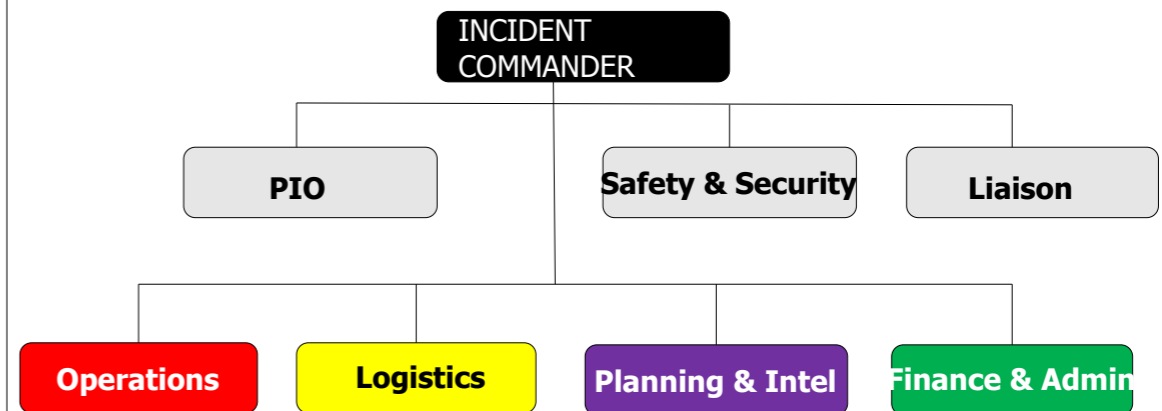
What is the Incident Command System?

ICS:

- Is a standardized, all-hazards incident management concept. (Everybody uses it)
- Enables a coordinated response among various jurisdictions and agencies. (Everybody uses it)
- Establishes common processes for planning and management of resources. (Everybody uses it)
- Allows for integration within a common organizational structure. (Everybody uses it)

23

ICS Organization



24

ICS for CV ARES

Other Repeaters
Solar 220M

INCIDENT COMMANDER — Comms to other agencies

146.760

PIO (IC)

Safety (OPS)

Liaison (OPS)

Operations

Logistics

Planning & Intel

Net Control

146.940

445.640

449.240

146.760

25

Why Tactical Callsigns?

What Did Helene Teach Us

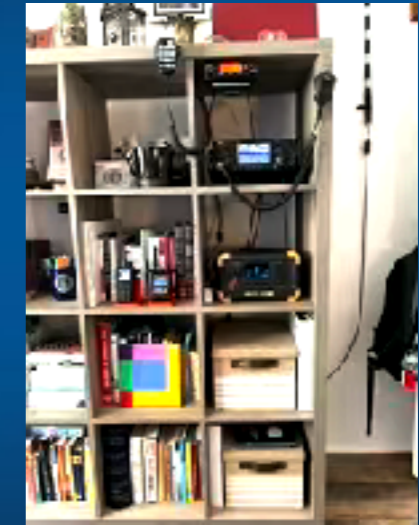
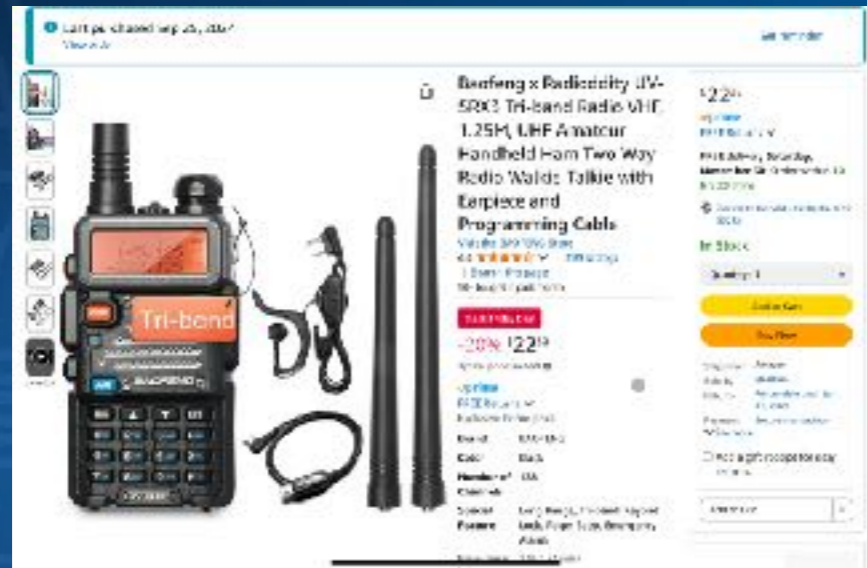


How Can I Participate?



ARESDB.COM

The Prepared Ham



Comm Plan PACE
(primary, alternate, contingency, emergency)

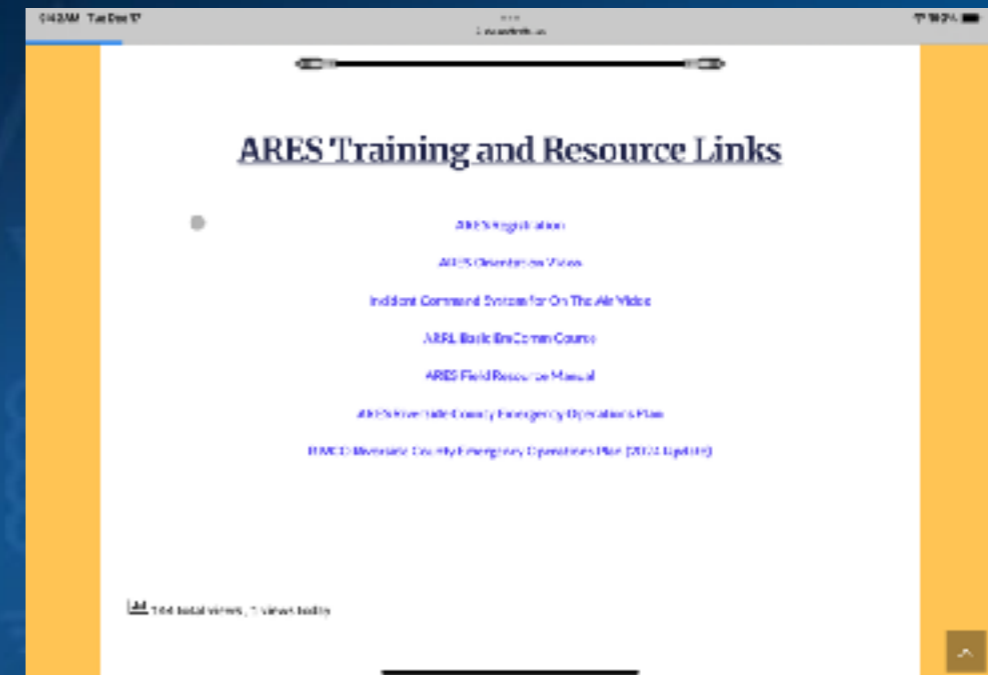
“Base this on the mission”

P= Cell

A= 2m/220/440/Digital Repeater (Base/Batt)

C= HF Winlink (Base/Batt)

E= Simplex or Runner (HT)



Amateur Radio Emergency Services

- What is ARES?
 - The Amateur Radio Emergency Service® (ARES) consists of licensed amateurs who have voluntarily registered their qualifications and equipment, with their local ARES leadership, for communications duty in the public service in the event of a communications emergency.
 - Simple, resilient, flexible, and prepared.



Questions?

N1GAY@arrl.net